

## Preface

Dear customer,

Congratulations on purchasing a high quality MAGINON product.

You have chosen a modern IP security camera with excellent technical equipment and respective accessory, which is particularly easy to operate.

The device comes with a 3 year warranty. In case of a defect in the IP security camera, you require the enclosed warranty card and proof of purchase. Keep these in a safe place.

## Imprint

Issued by:

**supra**

Foto-Elektronik-Vertriebs-GmbH  
Denisstr. 28A  
67663 Kaiserslautern  
Germany

## General

### Read and keep instructions



These Operating Instructions belong to this IP security camera. It contains important information about the start-up and handling.

For ease of understanding, the "IP security camera" is just referred to as IP security camera in these Operating Instructions

Study these Operating Instructions and, in particular the Safety information in detail prior to using the IP security camera. Non-observance of these Operating Instructions can lead to loss of data or damage to the IP security camera.

These Operating Instructions are based on valid standards and regulations of the EU. Also observe specific guidelines and laws in other countries!

Keep Operating Instructions for further use. When passing on the IP security camera to third parties please also include these Operating Instructions.

## Explanation of symbols

The following symbols and signal words are used in these Operating Instructions, on the device or on the packaging.



**DANGER!** These signal words indicate a high-level hazard which could cause death or serious injury if not avoided.



**WARNING!** This signal word indicates a high-level hazard which could cause death or serious injury if not avoided.



**CAUTION!** This signal word indicates a low-level hazard which could cause slight or moderate injury if not avoided.



**NOTE!** This signal word warns against potential material damage or provides useful additional information regards assembly or operation.

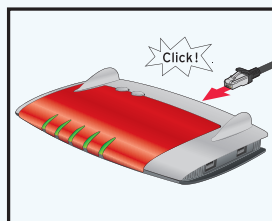
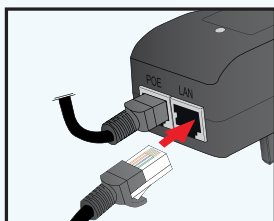
# QUICK START- INSTRUC- TIONS!

## Quick start instructions for Windows

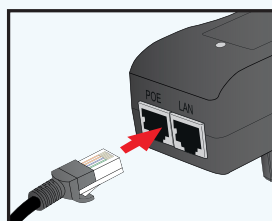
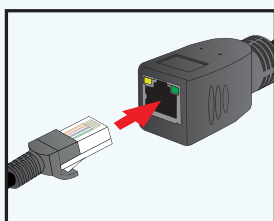
### 1. Hardware installation

- Connect IP security camera to router. Either using supplied network cable or via WLAN. To connect the IP security camera

using WLAN read instructions on page 26.



- Connect IP security camera with supplied LAN cable and plug it into the left LAN socket of the PoE adapter.



## 2. Software installation

- Install **"Supra IPCam"** software on your computer using the supplied CD.

supra IPCam Config

Unique ID	Model	Address	Camera name
006ED602E626	IPC	192.168.16.183:8000	Besucherraum
006ED641F1F4	IPC	192.168.16.198:80	

## 3. Configuring the IP security camera

- In the program supra IPCam Config, click on "Start search" and then select **"Settings"**.

## 4. Implement setup assistant

- Select the third menu point "Installation with supra space" from Setup assistant.

Please select an option:

- ☐ Only use camera in home network.

The wizard sets up the camera name and wireless connection. You can then use the camera in your home network.

- ☐ Use camera in Internet

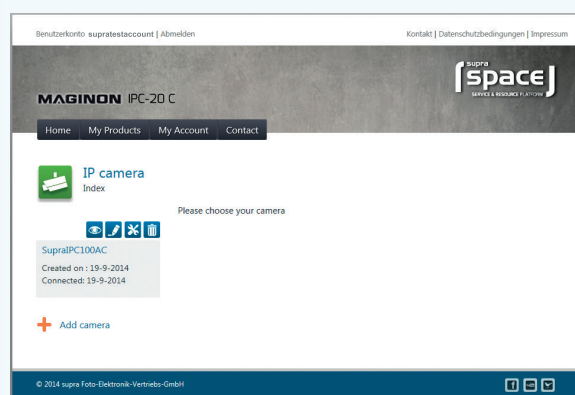
The wizard sets up the camera name, wireless connection and a free domain. You can then use the camera in your home network and on the Internet.

- ☒ Use camera with supra space (recommended).

The wizard sets up the camera name, the wireless connection and supra space. With supra space you have fast and easy access to your camera from anywhere.

## 5. Activate IP security camera

- Enter [www.supra-space.de](http://www.supra-space.de) in your Browser and log in.




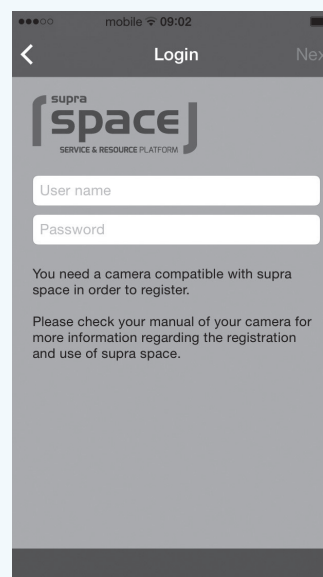
## 6. Download smartphone app

- Use **App Store** or **Google play** to download the app "Magainon IPC-Viewer" for your Smartphone or your Tablet PC and install app.



## 7. Setting up IP security camera in app

- Use symbol  to log onto supra space. Use the log-on information used in the Setup Assistant.
- After logging on, the camera is immediately available from a list under the chosen camera name. Select it from the display in order to view the camera image.

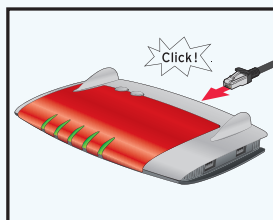
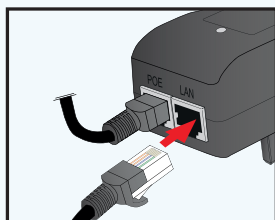


# **QUICK START INSTRUC- TIONS!**

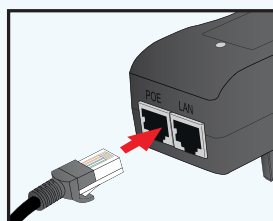
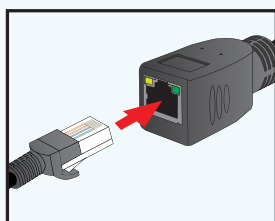
## **Quick start instructions for MAC OS**

### **1. Hardware installation**

- Connect IP security camera to router. Either using supplied network cable or via WLAN. To connect the IP security camera using WLAN read instructions on page 26.

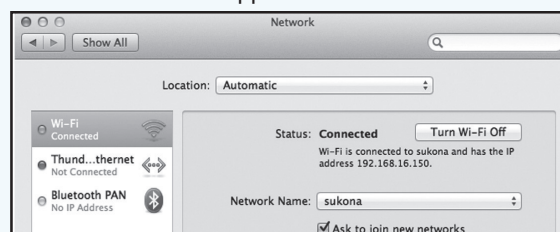


- Connect IP security camera with supplied LAN cable and plug it into the left LAN socket of the PoE adapter.



## **2. Determine IP address of your router**

- First you require the local IP address of your router. In order to determine the IP address of the router on your Mac computer, click on menu bar . Select "System settings" and then "Network".
- The below window appears.

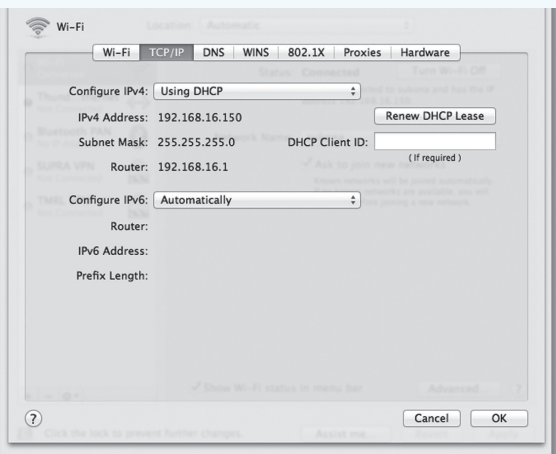


- Select the current network connection from the window. This is indicated by the preceding green point ( in this case "WLAN").
- Next open "Further Options".



Change to page "TCP/IP".

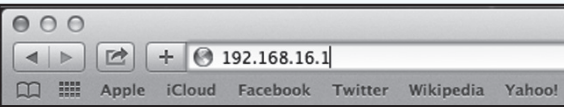
The local IP address of your router is listed behind "Router". The address in the below example is 192.168.16.1.



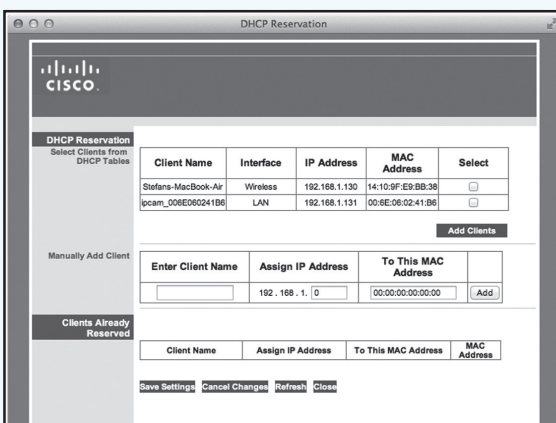
Note down this local IP address.

### 3. Determine IP address of IP security camera

- Open Internet Browser "Safari" and enter the previously determined IP address of the router.



- The configuration page of the router opens.



Client Name	Interface	IP Address	MAC Address	Select
Stefans-MacBook-Air	Wireless	192.168.1.130	14:10:9F:E9:BB:38	<input type="checkbox"/>
ipcam_006E060241B6	LAN	192.168.1.131	00:6E:06:02:41:B6	<input type="checkbox"/>

Manually Add Client

Enter Client Name	Assign IP Address	To This MAC Address
	192.168.1.0	00:00:00:00:00:00

Clients Already Reserved

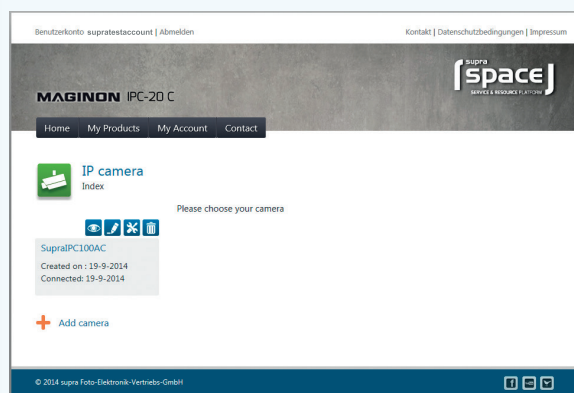
Client Name	Assign IP Address	To This MAC Address	MAC Address

Save Settings Cancel Changes Refresh Close

- Log on to the router. The log-on information can be found in the Operating Instructions of your router.
- Look through the settings for an option with the name "DHCP table" or "DHCP reservation". All devices connected to the router are listed here. The name of the list can differ from one router to the next. Consequently also check the Operating Instructions of your router.
- In the adjacent example, the IP security camera is listed as "ipcam\_006E060241B6". Next to it is the local IP address of the IP security camera (here: 192.168.1.131).

## 5. Activate IP security camera

- Enter [www.supra-space.de](http://www.supra-space.de) in your Browser and log in.




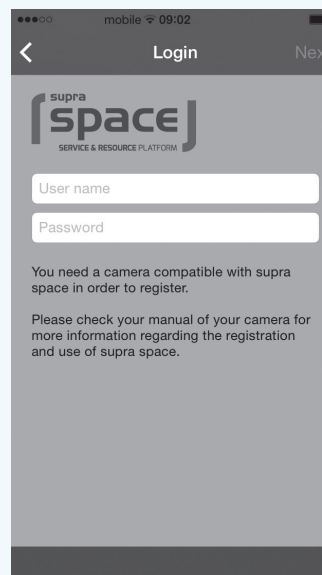
## 6. Download smartphone app

- Use **App Store** or **Google play** to download the app "Magainon IPC-Viewer" for your Smartphone or your Tablet PC and install app.



## 7. Setting up IP security camera in app

- Use symbol  to log onto supra space. Use the log-on information used in the Setup Assistant.
- After logging on, the camera is immediately available from a list under the chosen camera name. Select it from the display in order to view the camera image.



## Safety

### Correct use

The IP security camera is solely designed to be used as a IP security camera . It is only suitable for private and not or commercial use.

Only use IP security camera as described in the operating instructions. Any other use is deemed to be incorrect and can cause material damage and loss of data.

The manufacturers or dealers do not accept any liability for damage resulting from improper or incorrect use.

### Safety information



#### **WARNING!**

#### **Electrocution hazard!**

Faulty electrical installations or excessive mains voltage can cause electrocution.

- Only connect IP security camera if the mains voltage of the power point matches the voltage specified on the rating plate.
- Only connect IP security camera to an easily accessible socket allowing quick disconnection from the power supply in case of a fault.
- Please use only the PoE adapter supplied
- Do not operate IP security camera in case of visible damage or if the mains cable or connector is defective.

- Damaged mains cables of the IP security camera must be replaced by the manufacturer or customer service or a similar qualified person.
- Do not open housing but have repair carried out by an expert. Contact a specialist workshop. All liability and warranty claims shall be void in case of repairs carried out by users, incorrect connection or improper use.
- The IP security camera may not be operated with an external timer or separate remote control system
- Never immerse IP security camera or mains cable or plug in water or other fluids.
- Never touch mains connector with wet hands.
- Never remove mains connector from socket by pulling on the mains cable, but always pull on main plug.
- Never use mains cable as a carrying handle.
- Keep IP security camera, mains connector and mains cable away from open flames and hot surfaces.
- Install mains cable in such a way that it does not become a trip hazard.
- Do not kink mains cable and do not install it over sharp edges.
- Never store the IP security camera in such a way that it can fall into a trough or wash basin.
- Never touch an electric device that has fallen into water. Always pull out mains connector immediately in such a situation.



- Ensure that children do not push objects into the IP security camera.
- When not using or cleaning the IP security camera or in case of a fault, always switch off the IP security camera and pull mains connector out of socket.

**WARNING!**

**Hazard or children and persons with reduced physical, sensory or mental abilities (such as partially disabled, older persons with limited physical and mental abilities) or lack of experience and know-how (such as older children).**

- This IP security camera may be used by persons with reduced physical, sensory or mental abilities or lack of experience or know-how provided they are supervised or have been instructed on how to safely use the IP security camera and understand hazards resulting therefrom. Children may not play with the IP security camera. The camera may not be cleaned or maintained by children.
- Keep children under the age of eight away from the IP security camera and the mains cable.
- Do not leave IP security camera unintended during operation.
- Keep packaging foil away from children. They could get caught in it during play and could suffocate.

**Note!****Danger of material damage!**

Incorrect use of the IP security camera can cause the IP security camera to be damaged.

- When installing and assembling the IP security camera ensure that a 10 cm gap is maintained on all sides in order to provide adequate ventilation. Ensure, in particular, that ventilation slots are not covered by newspaper, table clothes or curtains.
- Place IP security camera on an easily accessible, level, dry, heat-resistant and sufficiently sturdy work surface. Do not place IP security camera at the edge or periphery of the work surface.
- Avoid overheating by never positioning the IP security camera directly against a wall or underneath mounted cupboards.
- Never place IP security camera on or near hot surfaces (e.g. stove tops, etc.).
- Ensure that mains cable does not come into contact with hot parts.
- Never expose IP security camera to excessive temperatures (heating, etc.). Never pour liquid into IP security camera.
- When cleaning, never immerse IP security camera in water and do not use steam cleaner. The IP security camera could otherwise be damaged.

- Never place IP security camera in dishwasher. This would destroy the camera.
- Do not use IP security camera if plastic or metal parts of the camera show cracks or tears or are deformed. Replace damaged parts only with original spare parts.
- Damage to the electronics, lens or accessory caused by external influences such as impacts, falls or others are not covered by the warranty and are chargeable.
- The surveillance camera is waterproof to IP standard IP65, so it can also be used outdoors.



The PoE adapter is suitable for indoor use only!  
The adapter may not be used outside buildings.

## Start

### Preparing the IP security camera

- Remove packaging material and all protective foil.

### Contents of box



**WARNING!** Caution! Keep plastic foil and bags away from babies and small children as danger of suffocation.



#### NOTE!

##### **Danger of damage!**

If the packaging is carelessly opened with a sharp knife or other pointed objects, the product can be easily damaged.

- Please open packaging carefully.

1. Check that delivery is complete (see **Fig. A**).
2. Remove IP security camera from packaging and check whether the equipment or parts are damaged. If yes, do not use IP security camera. Contact the service address of the manufacturer listed on the Warranty card.

## Assembling the IP security camera

Using the supplied wall fixing, install IP security camera at a fixed location.



### Note!

#### Danger of material damage!

Incorrect use of the IP security camera during assembly can cause the IP security camera to be damaged.

- Do not place IP security camera directly next to electronic devices as this could produce interference. In case of picture interference, test IP security camera at another location.
- Select the installation site for the IP security camera so that the lens is not exposed to sun light.
- Hold the plate of the wall fixing containing holes against the surface of the selected installation site and mark the holes on the surface, using a pencil.
- Before drilling any holes, check to ensure there are no electrical cables, gas or water pipes beneath the surface to be drilled.
- To drill suitable holes, use a 6 mm masonry drill for dowels in stone or concrete surfaces or a 3 mm wood drill for timber surfaces.
- After drilling the holes insert supplied wall plugs into holes so that they are flush with the surface.
- Secure wall fixings with supplied bolts.

## Secure IP security camera

Using the four bolts, secure the IP security camera to the retaining plate of the wall fixing. Align the IP security camera as desired.

## Complete camera assembly

Power is supplied via a network cable and the provided mains adapter for each feed-in (PoE – Power over Ethernet). The network cable can be up to 100 m long.

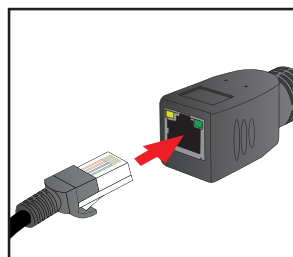


Fig.: 1

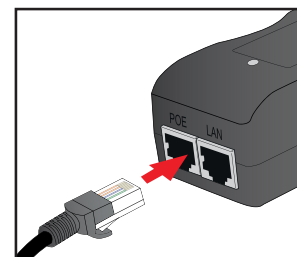


Fig.: 2

Connect IP security camera and PoE adapter using supplied LAN cable and plug it into the left socket (PoE) of the PoE adapter. The IP security camera is now connected to power.

## Installing the IP security camera

### Hardware installation

In order to carry out the first settings in the IP security camera, the network cable must be connected to the router. A wireless connection via WLAN is only available once this has been set up in the IP security camera using the cable connection.

Plug a LAN cable into the right socket (LAN) of the PoE adapter and connect it to the router.

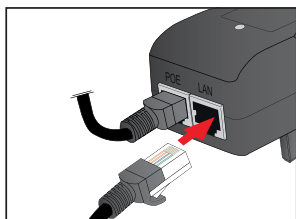


Fig.: 3

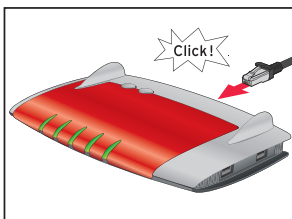


Fig.: 4

The network connection of the IP security camera contains two control LEDs.

- Yellow indicates that network activity is taking place.
- Green: Indicates that the IP security camera is connected to a network.



### NOTE!

If your router does not contain a port for connecting the network cable, the IP security camera can also be set up without a router.



### NOTE!

For this purpose deactivate all networks existing on your computer and plug the network cable of the IP security camera directly into the computer. You can also access the IP security camera via the program supra IPCam Config (see section Software installation).

### System requirements

Operating system: The software provided on the enclosed CD is only suitable for Windows operating systems. Using the Browser access, the IP security camera can also be set up using Mac OS, Linux or other operating systems.

- Operating systems: Windows XP (SP 2), Vista, 7, 8
- Processor: 2.0 GHz or higher
- RAM memory: 512 MByte or higher
- Network card: 10MBit/s or higher
- RAM memory: 512 MByte or higher
- Internet-Browser: Internet Explorer (from version 7), Firefox (from version 3), Google Chrome, Safari, Opera (latest version)
- Screen resolution: 1024 x 768 or higher

### Software installation

The supplied software is only suitable for Windows systems. For installation on Mac systems, please read section **"Installation on Mac OS X"**.

The software must be installed on a computer connected to the same router as the IP security camera.

3. Place supplied software CD into CD/DVD drive of your computer.
4. The below selection menu should then appear automatically. If the menu does not start automatically, select drives from your computer and open the CD/DVD drive named "Magainon IP Camera" by clicking on it with the mouse.
5. Start program by double clicking on **CDMenu/CDMenu.exe**.



6. Click on "supra IPCam" to install the program **supra IPCam Config**. Follow on-screen information until software installation is completed.
7. Once installed, the program can be found under "All programs" and **supra IPCam Config**.
8. By clicking on the option "Operating Instructions" in the Start menu of the Software CD, the Operating Instructions can be opened on screen in the system language of the computer.
9. In the event of your computer not containing a suitable program to open pdf files, you can also install the program **"Adobe Acrobat Reader"**.

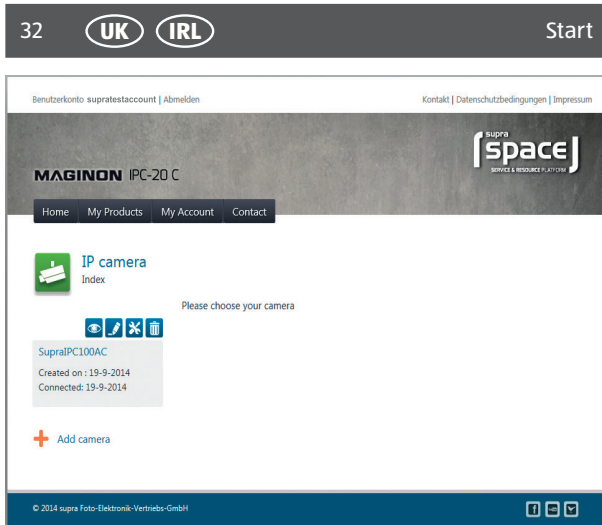
### Install Cloud supra space:

Your Maginon IPC-20C has been set up for simple camera installation. For this purpose we have provided a Cloud solution that can be quickly and easily set up. After installation you can access the camera any time via supra space.

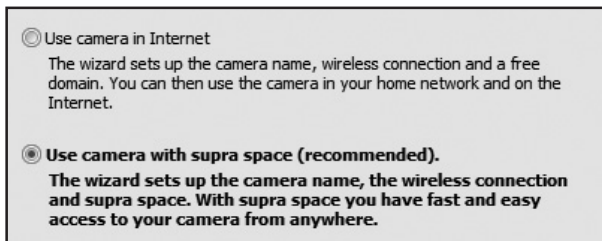
A Cloud is a platform on the Internet producing the connection between camera and your end device (computer, mobile, TabletPC). Only the connecting data required for the camera are stored at supra space but not camera images.

Below the few steps for setting up your Maginon IPC-20C for use via the Cloud are explained.

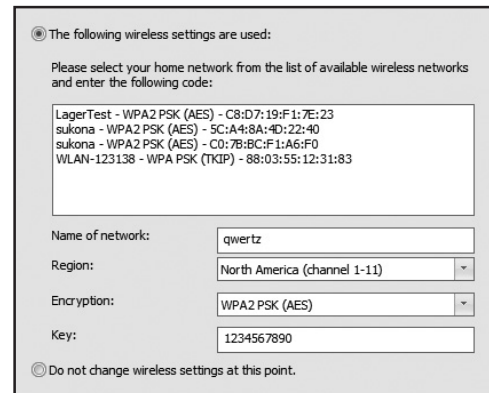




1. In the program IPCam Config call up the Setup assistant under "Settings".
2. Select "Maginon IPC-100AC" as camera model and click on "OK". This calls up the existing settings of the camera.
3. In order to set up the camera for use via supra space select the third option "Camera with supra space during the next step (recommended)".



4. Enter any name for the camera in the next window, describing, for instance, the location.
5. In the next step select Wireless network and set region to "Europe" and enter the key.



6. Now enter the registration data for logging on to supra space. Select any user name and a password consisting of at least 8 characters. Also enter a valid email address. Note down this log-on information.
7. The last step repeats again the implemented settings.
8. Click on "Continue" to carry out the camera set-up.

☒ I want to register with supra space as a new user:

User name:

Password:

Repeat password:

E-mail:

☐ I am already registered with supra space:

User name:

Password:

You can recover your user name or password in the Internet under [www.supra-space.de](http://www.supra-space.de).

Setup wizard - Checking

The entered settings can now be stored in the camera:

Name of camera: (do not change)

Wireless settings: qwertz (change)

Domain name: (do not change)

supra space: testuser (change)

Back Continue Cancel

## Call up “supra space” cloud

Entering link

**<http://supra-space.de> or <http://supra-space.com>**

in your Browser and open the start page of the Cloud.

Enter user name specified in the Set-up assistant. The overview now lists all products of your IP camera. Select these to call up your camera. The following page then appears.

Benutzerkonto: supratestaccount | Abmelden Kontakt | Datenschutzbedingungen | Impressum

**MAGINON IPC-20 C**

Home My Products My Account Contact

**IP camera**  
Index


Please choose your camera


SupraPC100AC  
Created on: 19-9-2014  
Connected: 19-9-2014

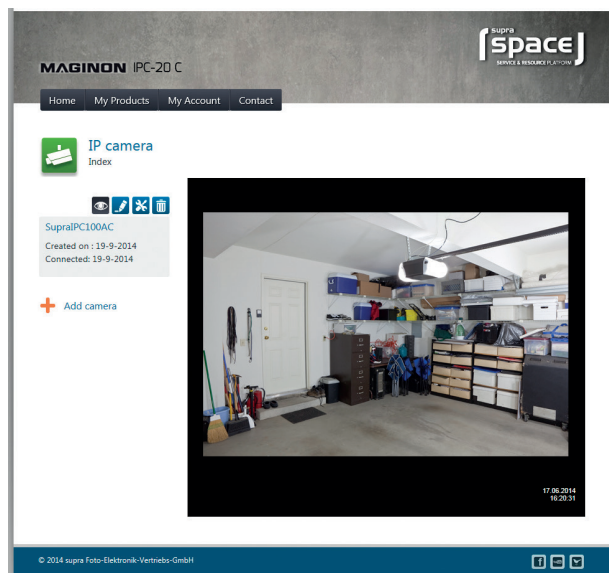
+ Add camera

© 2014 supra Foto-Elektronik-Vertriebs-GmbH

### Use camera through “supra space”

Select symbol  to call up the image of your Maginon IPC-20C.


Using  call up the Web surface of your camera. Log on with user name “admin” and without a password. You then have access to all settings of your Maginon IPC-20C.

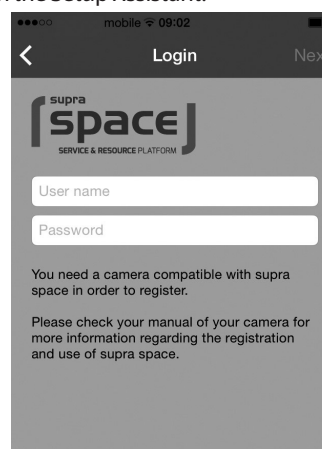


### Use app “Maginon IPC Viewer”

The app “Maginon IPC Viewer” is available for your camera from the App Store and from Google Play. Load the app onto a Smartphone or a TabletPC and start app.



Use symbol  to log onto supra space. Use the login information used in the Setup Assistant.



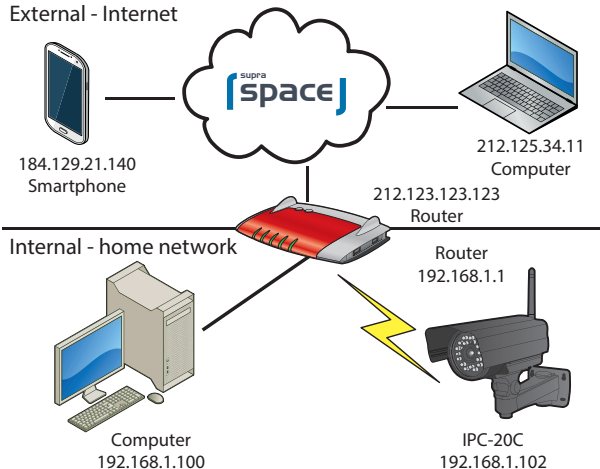
After logging in, the camera is immediately available from a list under the chosen camera name. Select it from the display in order to view the camera image.



## Manually setting up IP security camera

In the subsequent graphics it is schematically shown how the IP security camera is integrated in your existing home network and how it is accessed from the Internet.

External - Internet



The router is central to this operation. The router is the connection between your home network and the Internet. The router is thus connected to two networks at the same time, the Internet and your home network. The router is accessed via a different address (IP address) from each of the networks.

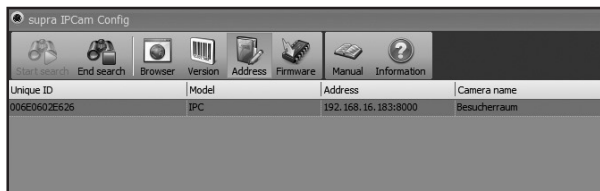
The IP security camera is directly connected to the router, either via a network cable or wireless via WLAN. This allows access to the IP security camera from the home network and the Internet.

As the router is, however, protected from Internet access via Firewall a separate access must be set up for the IP security camera. This is referred to as Port forwarding. The following installation steps are required to set up the IP security camera in the home network and via the Internet:

1. The IP security camera must be connected to the router using the supplied network cable (see section Hardware Installation).
2. Install the supplied software (see section Software installation).
3. Set up IP security camera automatically or manually in home network:
  - For Windows systems: (see section Setting up the IP security camera).
  - For Mac systems (See section Installation on Mac OS X).
4. Where desired, a wireless connection can be set up between the IP security camera and the router using WLAN (see section Manual set up of IP security camera).
5. Set up a Port forwarding in the router to allow access to the IP security camera via the Internet (see section Router set-up).
6. Set up a fixed Internet address (see section Setting up the domain name).
7. Installation of Apps for Smartphones and TabletPCs (see section Set up App).
8. The standard set-up of the IP security camera is described from section Hardware Installation onwards. Further information relating to the use and settings are provided from chapter Fixing the IP security camera onwards.

Ensure that the IP security camera is connected to the router via the network cable and is connected to the mains (see section Hardware Installation). A network connection between the computer and the router must also exist. Open the program **supra IPCam Config**.

In the program select "Start search", to open a list of available IP security cameras.



From the list select the IP security camera to be set up or called up. This is also necessary if only one camera exists.

At the top of the menu click on "Browser". The login page of the IP security camera then appears in the window of the Internet browser.

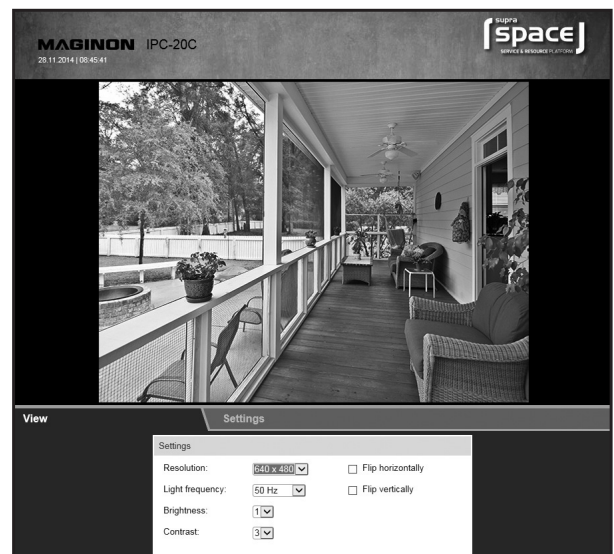


Select the desired language and then enter the following in the text window:

- User name: admin
- Password: Leave empty

Click on "Login".

The viewing window of the IP security camera is displayed.



At the bottom of the window change to "Settings" and then to "Wireless setting" (⚙️).

42 UK IRL Start

WIRELESS SETTINGS

Use wireless LAN: ☒

Network name (SSID):

Region:

Encryption: ☒

Authentication: ☒

Key format: ☒

Key length: ☒

Standard key:

Key 1:

Key 2:

Key 3:

Key 4:

Camera must be rebooted to copy the wireless settings.

Save

Scan

Under “Region” select the region in which the surveillance camera will be used.

In order to automatically search for the wireless network of your router, click on “Search” below the entries.

SCAN FOR WIRELESS NETWORKS

BSSID	SSID	Mode	Encryption	Select
10:FE:ED:7B:2C:5C	TestTlink	Infrastructure	WPA2 PSK (AES)	<input type="radio"/>
34:A8:4E:57:13:80	sukona	Infrastructure	WPA2 PSK (AES)	<input type="radio"/>
C0:7B:BC:F1:A6:F0	sukona	Infrastructure	WPA2 PSK (AES)	<input type="radio"/>

Unsupported network configurations cannot be selected.

Camera must be rebooted to copy the wireless settings.

USE

SCAN AGAIN

Select the desired WLAN network from the list by marking it under “Selection” and click on “Use“. The settings then change back to Wireless settings.

Enter the wireless network key of your router under “PSK” or “Key“. This should be stored in your router documents.

Click on “Apply“, to accept the changed settings. Next, restart the IP security camera to accept the changes. The restart takes about 2 minutes.

Start UK IRL 43

You can now remove the network cable between the IP security camera and the router. Do, however, note that the IP security camera has a different local address through the wireless connection than when connected via the network cable.

Once restarted, the IP security camera must be searched for using the program **supra IPCam Config** and opened through “Browser”.

### Setting up the router

The IP security camera is now set up in such a way that you can access it from your home network.

You now have to set up your router in such a way that access from the Internet is allowed. As in most cases, the router is protected against such access by a Firewall, a separate access for the IP security camera must be opened in the router.

If your router supports the function **UPnP**, access is set up automatically. As the option UPnP is activated in the IP security camera as a default setting, you can test in the following manner whether automatic set-up to the Internet has been successful:

1. Open address

**<http://supracam.net/ip.aspx> in a Browser window.**

The public IP address of your home network will be displayed. The software must be installed on a computer connected to the same home network as the IP security camera.

2. Enter the shown public IP address in the Browser of a device that is not connected to the Internet via your home network. Activation from the same network is generally not possible.

3. If the log-on page of your IP security camera opens automatically, access for the IP security camera has been set up automatically in the router. You can then continue the installation with section 5.7., Set up Domain name,.
4. Where automatic set up via the UPnP function is not possible, the respective access must be set up manually. This is referred to as Port forwarding. During this process, a single access is directly passed on to the IP security camera.

The below example shows the settings to be selected in the router to set up such an access. As the settings of the router can differ considerably, a general description cannot be provided at this point. Please check in the router documents how individual devices can access the router. This information can generally be found under "Port Forwarding".

We also have provided more detailed descriptions for different router models of how to set up Port forwarding. These descriptions can be found on Internet page <http://www.ipc-info.com>.

If your router is not listed, please contact our Service Hotline. The number is provided on the warranty card.

5. To start the configuration program you require the local network address of your router. You can check the local network connection by searching for the IP security camera in the program **supra IPCam Config** and then displaying the network settings using option "Address". Note down the address listed as "Standard gateway".

6. Further information for activating the router can also be found in the Operating Instructions of your router. For this, enter the local network address of your router in the Browser and open the configuration menu. Next, open the Port forwarding menus in the Configuration menu.

In the below example, this can be found under "Applications & Games" as "Simple Port forwarding".

Application Name	External Port	Internal Port	Protocol	To IP Address	Enabled
None	---	---	---	192.168.1.0	<input type="checkbox"/>
None	---	---	---	192.168.1.0	<input type="checkbox"/>
None	---	---	---	192.168.1.0	<input type="checkbox"/>
None	---	---	---	192.168.1.0	<input type="checkbox"/>
None	---	---	---	192.168.1.0	<input type="checkbox"/>
None	---	---	---	192.168.1.0	<input type="checkbox"/>
IPCamera1	81	81	Both	192.168.1.110	<input checked="" type="checkbox"/>
IPCamera2	82	82	Both	192.168.1.111	<input checked="" type="checkbox"/>
	0	0	Both	192.168.1.0	<input type="checkbox"/>
	0	0	Both	192.168.1.0	<input type="checkbox"/>
	0	0	Both	192.168.1.0	<input type="checkbox"/>

In the provided example two IP security cameras are connected to the router, one camera with the name IPCamera1 and the local network address **192.168.1.110**, a second camera with the name IPCamera2 and the local network address **192.168.1.111**.

Only the external port 81 is set up for the IP security camera IPCamera1. TCP and UDP are the allowed protocols although only TCP is required. These cameras are accessed via the Internet using address <http://xxx.xxx.xxx.xxx:81> (with xxx.xxx.xxx.xxx being the public IP address of the router).

81	81	Both	192.168.1.110	<input checked="" type="checkbox"/>
----	----	------	---------------	-------------------------------------

In order to avoid problems the same internal and external port of the IP security camera should be chosen. Activate the IP security camera again using the program “**supra IPCam Config**”. Under “Settings” change to “Network settings” and change the value under “Port” also to 81. Save the changes. You should then be able to access the IP security camera via the camera as described at the beginning of this section. / xxx.xxx.xxx.xxx:81 access (xxx.xxx.xxx.xxx is the public IP address of the router).



#### NOTE!

- Ensure that for every existing IP security camera a separate port is being used and that an external Port may not be assigned twice.

### Setting up the domain name

On the Internet, the IP security camera can be accessed through the public IP address of the router. As in many cases the public IP address of the Internet access changes constantly, it is advantageous if the IP security camera can be accessed via a fixed address. For this purpose, a DDNS server (Dynamic Domain Name System) is available.

For free registration of a fixed Internet address, open the page

**<http://supracam.net/> in your Internet Browser.**

next, select “Register” from the login window.

7. First, enter a user name. This may only consist of small and capital letters, numbers or a hyphen. The user name is used for the Internet address of the IP security camera. Enter, for instance, the user name “ipcamera” and, after registration, the IP security camera can be called up via address **<http://ipcamera.supracam.net>** as soon as it is connected to the Internet.
8. Enter another password , repeat it and then click on “Register”.
9. The thus registered name must now also be entered in the IP security camera. In the settings of the IP security camera open point “DDNS settings” and select “Use DDNS” by ticking this option. Under User name and Password enter the same data used for registration.

48

UK IRL

Start

DDNS SETTINGS

Use DDNS:

☒

User name:

asdfghj1

Password:

\*\*\*\*\*

Domain name:

asdfghj1

supracam.net

You can register for this service free of charge at <http://supracam.net/>.  
Camera must be rebooted to copy the DDNS settings.

Save

10. Click on "Apply", to accept the changed settings. Next, restart the IP security camera to accept the changes. This operation takes around another 2 minutes.

The IP security camera is now reachable under the registered address.

### Setting up an app

The app "Maginon IPC Viewer" is a program for accessing the IP security camera from your iPhone or Android Smartphone or a tablet. The App can be downloaded free of charge from the "App Store" and also from "Google Play".

- Upon opening the App after installation, an empty window appears. Select "New" to set up the App for your IP security camera. The entry window opens showing the data required for the IP security camera as follows.
- Provide the following general information:
  - Name:** Enter any name for the IP security camera to be set up.
  - User name:** Enter "admin" as user name.

Start

UK IRL

49

- Password:** Leave password field blank.
- Connection mode:** Select "Dynamic" as connecting mode.
- Domain name:** Enter the fixed Internet address specified under **<http://supracam.net/>**. If the IP security camera can, for instance be reached via **<http://ipcamera.supracam.net/>** you can enter "ipcamera" or also "ipcamera.supracam.net".

- Select 

Save

 -button to save the entries and return to the camera list.
- In order to select the set-up IP security camera for display or editing, touch the respective entry in the list on the display. A preview with camera image, processing functions and information of the selected IP security camera opens.
- In order to obtain a full-size view of the camera image, touch the image in Preview or select "Display". The Live image of the IP security camera is then shown as a full image.

Select to save the entries and return to the camera list.

Settings

Save

GENERIC INFORMATION

Camera name

Required

User name

Required

Password

CONNECTION MODE

Manual

Dynamic


DYNAMIC CONFIGURATION

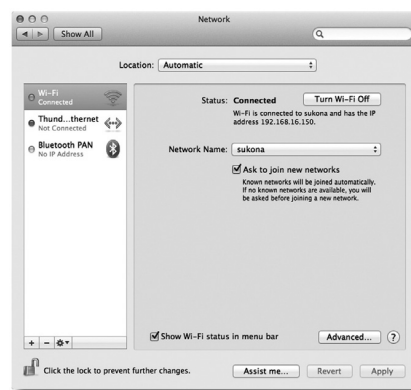
6. In order to select the set-up IP security camera for display or editing, touch the respective entry in the list on the display.
7. A preview with camera image, processing functions and information of the selected IP security camera opens.
8. In order to obtain a full-size view of the camera image, touch the image in Preview or select **"Display"**. The Live image of the IP security camera is then shown as a full image.

### Installation on Mac OS X.

First install the IP security camera following the steps up to section System requirements. In order to be able to configure the IP security camera on your Mac OS X you first have to determine the IP address of your router. This IP address allows access to the configuration page of the router. Next, you require the IP address of the IP security camera from the settings data of the router. The configuration page of the IPC-20C can be opened with this address and settings of the IP security camera can be entered.

### Determine IP address of your router

9. In order to determine the IP address of the router on your Mac computer, click on the Apple symbol in the menu bar .
10. Now click on "System settings" and then on "Network".
11. Select the current network connection from the window. This is indicated by the preceding green point, in this case "WLAN", click on "Further Options":



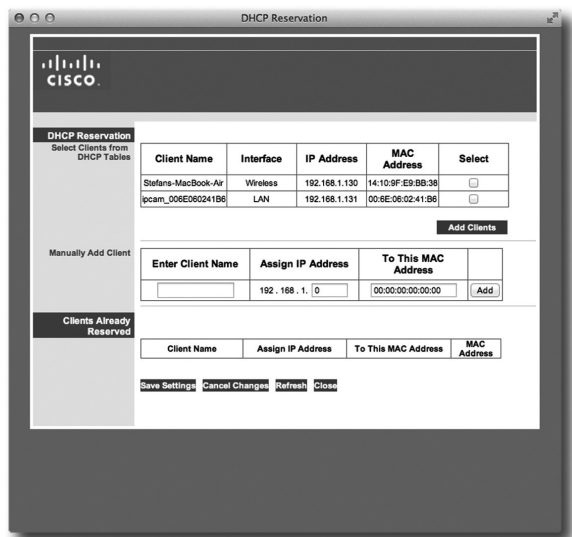
12. Change to page "TCP/IP", where you find the IP address of your router under "Router". The address in the below example is 192.168.16.1.



### Determine IP address of IP security camera

Open Internet Browser "Safari" and enter the previously determined IP address of the router. The configuration page of the router opens. Generally an option "DHCP table" or "DHCP reservation", can be found under Settings, which can be called up. You then receive a list of all devices in the network as shown in the below example.

Please note that the illustration of the configuration of your router can differ from the one in the example.



In this list, the IP security camera can be found under the name "ipcam\_xxx". In the above example this would be "ipcam\_006E060241B6". Next to it is the local IP address of the IP security camera (here: 192.168.1.113). Enter it in a new window of the Browser (Safari) in order to open the configuration page of the IP security camera.

Now continue the installation as specified in section Manual set-up of IP security camera.

### Installation tips

Below, we have provided different information relating to the installation of the IP security camera in case of problems with the standard installation. For further information see page

<http://www.ipc-info.com>.

### The program supra IPCam Config can not find the camera.

Are IP security camera and computer connected to router?

1. If various wireless networks are active on the computer, deactivate the wireless networks to which the IP security camera is not connected.
2. Deactivate the Firewall of the computer.

### The router has no port for the network cable.

1. Connect the IP security camera directly to the computer.
2. Deactivate all networks on the computer.



3. Connect the IP security camera to the computer using the network cable
4. Use program *supra IPCam Config* to search for the IP security camera.
5. Under **supra IPCam Config** select camera and then the "address"
6. Deactivate "DHCP" and enter under "Static configuration":
  - IP address: 169.254.10.100; Subnet mask: 255.255.0.0
  - "Standard gateway" and "DNS Server" remain empty
7. Click on "Apply" and wait until the program shows the IP security camera.

#### **The wireless connection between the IP security camera and the router is not working.**

1. Check the wireless settings and in particular the entered code. All WLAN channels may not be enabled. Adjust the "Region" setting when entering the Wireless settings.
2. Your router may allocate changing local IP addresses each time it connects. Search for the IP security camera again using **supra IPCam Config**.

#### **IP security camera can be reached locally but not through the Internet.**

This generally always occurs when Port forwarding is not or is incorrectly set up in the router.

Read section Setting up the Router, and information contained on Internet page:

**<http://www.ipc-info.com>.**

#### **Internet connection via 3G/4G mobile phone networks.**

In case of an Internet connection via a 3G/4G mobile phone network, no public IP address may be allocated to your Internet access. In this case you have to apply to your Internet provider to provide you with a public IP address.

Also, the option "**Open Internet**" must be activated with the Internet provider "Drei.at".

#### **Access via the public address is not possible from your own network.**

Generally it is not possible to call up the IP security camera via the Internet from the same network the camera is connected to. This can only be done using the local network address.

## Use

### Using with computer

#### Activate IP security camera

1. First open your Browser program (Internet Explorer, Firefox, Opera, Google Chrome, Safari or similar). Next to it is the local IP address of the IP security camera. If you wish to access a IP security camera from a computer in the same network, you can also enter the local network address at this point.

2. Enter a User name and respective password to login. Next click on "Login". When using the IP security camera for the first time enter "admin" as User name and leave password field empty.

This starts the operating and settings program of the IP security camera.



#### Control IP security camera

Various elements and options are available for controlling the IP security camera. Some basic camera settings are shown below the camera image. The operating elements available and settings that can be changed depend on the authority of the user account.

As **Administrator** you can set up the camera image and carry out various settings.

As **Operator** you can set up the camera image (e.g. brightness and contrast) but cannot change any settings.

As **User** you can call up the camera image but cannot set up the camera image or change the settings.

### Setting the camera image

Under View enter the settings for the camera image.

Settings	
Resolution:	640 x 480 <input type="button" value="v"/> <input type="checkbox"/> Flip horizontally
Light frequency:	50 Hz <input type="button" value="v"/> <input type="checkbox"/> Flip vertically
Brightness:	1 <input type="button" value="v"/>
Contrast:	3 <input type="button" value="v"/>

- **Resolution:** This allows you to select whether the image of the IP security camera is shown in a resolution of 640 x 480 pixels or 320 x 240 pixel.
- **Light frequency:** Where the IP security camera is used in a room with neon lights, set the network frequency for the local power grid (50 Hz or 60 Hz). Where the IP security camera is used externally, select External use.
- **Brightness:** Specify a brightness value between 0 and 6. The higher the value, the brighter the camera image.
- **Contrast:** Specify contrast value between 0 and 6. The higher the value, the higher in contrast the camera image.

- **Mirror horizontally:** Select this option to mirror the camera image horizontally.
- **Mirror vertically:** Select this option to mirror the camera image vertically.

Horizontal and vertical mirroring of the camera image can, for instance be used when the IP security camera is ceiling mounted.

## Settings

The below sections provide an overview of all possible options of the IP security camera. In case of problems during the installation or use or changing of the settings of the IP security camera, these sections contain information outlining the available options.

1. In Your Internet Browser open access to the IP security camera and log on using a user account with administrator rights. The IP security camera is shipped with the user account "admin", not requiring a password.
2. Once logged on select "Settings" and the respective desired Settings category.

### Setting the device status

The device status provides information about current data and settings values of the IP security camera. Select symbol Device status from the below menu.

DEVICE STATUS	
Camera ID:	006E064204F1
Date and time:	28.11.2014 08:56:03
Firmware version:	81.2.0.150
Web interface version:	3.0.0.0
Camera name:	Cam
Connection status:	Wired
Alarm status:	Motion detection alarm
DONS status:	Successful (supracam)
UPNP status:	Successful

This page is updated automatically every 5 seconds.

### Setting up camera name

You can assign a name to the IP security camera in order to for instance make it easier to find in the network or to allow a clear assignment where several IP security cameras are used.

CAMERA NAME

Camera name:

Cam

Changes to camera names will be copied without rebooting the camera.

Save

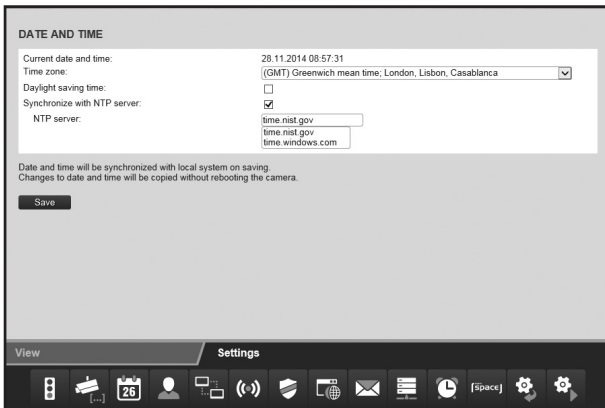
View

Settings

Select 2nd symbol "Camera name" from the below menu. Enter the desired name for the IP security camera in the text field and click on "Save". The camera name can consist of any characters and can contain up to 20 characters. The camera name is saved without having to restart the IP security camera.

### Setting current date and time

Set the time zone of the IP security camera and whether date and time should be automatically updated via a NTP server (Time server). The correct time is, for instance, required for planning alarms or FTP transfers.



1. **Current date and time:** This option shows the date and time as it saved in the IP security camera. This data is synchronized with the settings of the local system during saving. Where the option "Synchronies with NTP Server" is not selected, the date and time can be set with this function.
2. **Time zone:** Select the time zone in which the IP security camera is located.

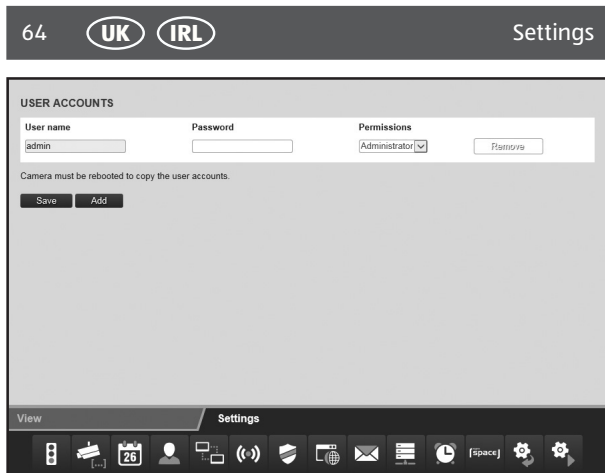
3. **Synchronizes with NTP server:** Select this option if the date and time are to be automatically updated via a NTP server.
4. **NTP Server:** Select the NTP Server via which the date and time are to be updated from the specified list. You can also enter NTP servers by name or IP address that are not listed.
5. Click on "Apply", to accept the changed settings. The changes are saved without having to restart the IP security camera.

### Setting up/setting the user account

You can set up anything up to 8 user accounts for the IP security camera. The IP security camera is then accessed via these user accounts.

The IP security camera is shipped with the user account "admin", not requiring a password. This account can neither be removed nor can the authority "Administrator" be changed. Only a password can be determined.

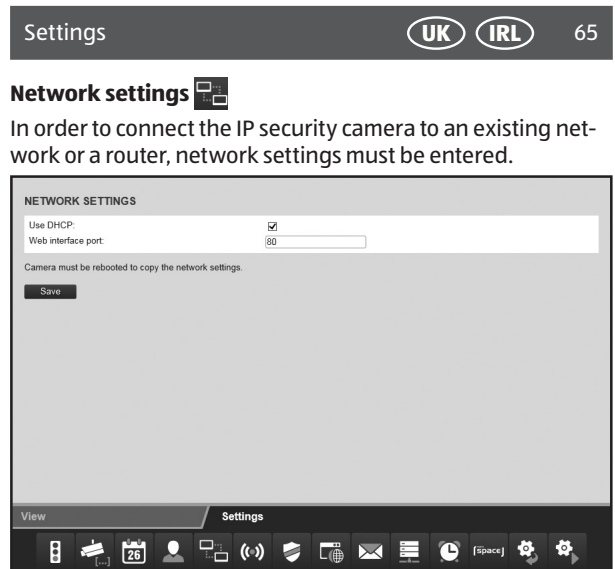
1. Click on "Add" to create a new user account.
2. Enter the user name for the new account and a password. User name and password can contain up to 12 characters. The password can also be left empty.
3. In order to delete a User account, click on "Delete". Where a new User account has been accidentally deleted without having confirmed this by clicking on "Save", you can select "User accounts" again to reinstate the account.



The following authorizations are available for a user account:

1. **Visitor:** Visitors can only call up the camera image but can not change any settings.
2. **Operator:** As Operator you can set up the camera image (e.g. brightness and contrast) but cannot change any settings.
3. **Administrator:** The user can change all settings.

Click on **"Save"**, to accept the changed settings. You have to restart the IP security camera before the changes are saved in the user accounts.



## Network settings

In order to connect the IP security camera to an existing network or a router, network settings must be entered.

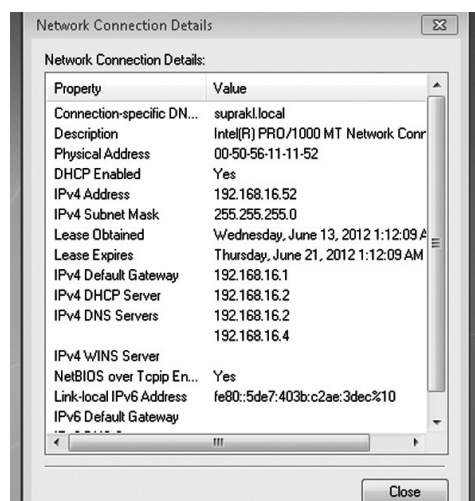
1. **Use DHCP:** If your network allows automatic addition of a new device (Client), select this option. All required data are obtained directly from the server or router.
2. **Port of Web user interface:** Connections in a network are made via Ports. Server and any connected device (Client) can operate via a different ports if the network address is identical.

A standard value of 80 is specified for the IP security camera. Where necessary this can be changed in the area 1-65535.

The port of Web user interface should always be set to the same port as the external port of the IP security camera in the router. (see section 5.6.Setting up the router).

Where automatic acceptance of new devices is not supported by your router, please deselect "Use DHCP".

Several ne input fields appear. Manually enter the access data of your network.



The required data can generally be called up from the computer via the network properties or can be obtained from the System Administrator of the network.

1. **IP address:** Enter an individual network address for the IP security camera. If, for instance, the network setting of

the computer for "Default Gateway" (Standard gateway) is address 192.168.1.1, the address of the IP security camera must be 192.168.1.x. x represents a value between 2 and 254 not as yet used in the network. Example: 192.168.1.100.

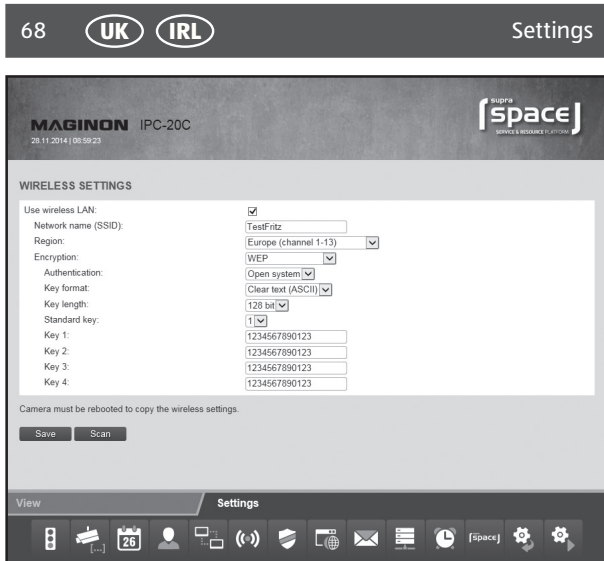
2. **Subnet mask:** Generally, the value 255.255.255.0 must be specified.
3. **Standard gateway:** Connection to standard gateway is used for connecting to the Internet. Generally this is the network address of the router.
4. **DNS Server:** The address of the DNS or name server can be called up from the network settings of your computer. Generally this is the network address of the router.

Click on "Apply", to accept the changed settings. You have to restart the IP security camera before the changes are saved in the network settings.

### Wireless settings

If the IP security camera is to be connected to a network using the wireless option WLAN (Wireless LAN), the required settings can be entered under this option. Select option "Wireless settings" from the bottom of the menu.

1. **Use DHCP:** Select this option if a wireless connection to the network is to be used. The configuration page of the router opens.



All data required for the used wireless network are stored in the router or Access Point through which the network is controlled. Select the router or access point settings and open the wireless network settings. Further information of how you can find this data is provided in the manual of your router or is available from your System Administrator.

2. **Network name (SSID):** Enter the name of your wireless network (also referred to as SSID).
3. **Region:** Depending on the region, W-LAN does not support various channels. Select the region in which the IP security camera will be used from the "Region" option.
4. **Encoding:** Data in wireless networks are in most cases transmitted encoded to prevent third-party access. State what type of encoding is used in your W-LAN network.

When "Uncoded" is selected, data are not encoded prior to transmission. When using "WEP", "WPA" or "WPA2" encoding, additional encoding information must be provided. Enter the same settings as shown for the router or access point.



#### NOTE!

- Enter wireless network settings without changing. This is the only way to ensure the correct connection of the IP security camera.
- Also, general settings of the router or access points should not be changed where this is not required. Otherwise this could result in problems with other WLAN devices in the network.

Use the "Search" function to start an automatic search of existing wireless networks. Select the desired WLAN network from the list by marking it under "Selection" and click on "Use". Where encoding data is required for the selected network, these must still be entered.

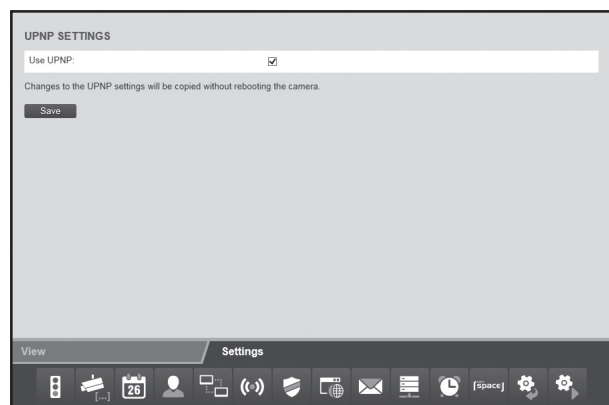
Click on "Apply", to accept the changed settings. Next, restart the IP security camera to accept the changes. The restart takes about 2 minutes.



### UPNP settings

Universal Plug and Play (UPnP) is used for controlling devices via an IP-based network. Where the router supports UPnP and where this function is activated, the required Firewall settings are automatically selected.

1. Select option "UPNP settings" from the bottom of the menu.



2. Select "Use UPNP", if UPNP is to be used for the connection of the IP security camera. "Use UPNP" is set as default.
3. Click on "Apply", to accept the changed settings. The changes are saved without having to restart the IP security camera.

### DDNS settings



#### NOTE!

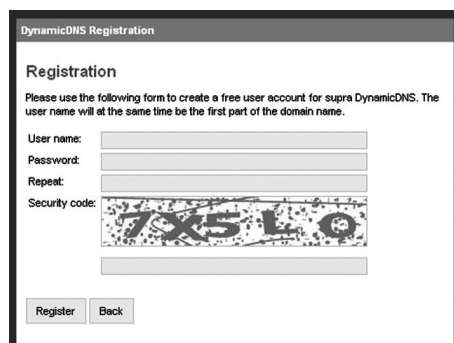
- These settings are only of importance where manual installation was selected. When using supra space, no further settings have to be entered.

On the Internet, the IP security camera can be accessed through the IP address of the router or server. As in many cases the public IP address of the Internet access changes constantly, it is advantageous if the IP security camera can be accessed via a fixed address. For this purpose, a DDNS server (Dynamic Domain Name System) is available through which a fixed address can be set up for the IP security camera.

For free registration of a fixed Internet address, open the page:

**<http://supracam.net/>** in your Internet Browser.

Next, select "Register" from the login window.



**DynamicDNS Registration**


**Registration**

Please use the following form to create a free user account for supra DynamicDNS. The user name will at the same time be the first part of the domain name.

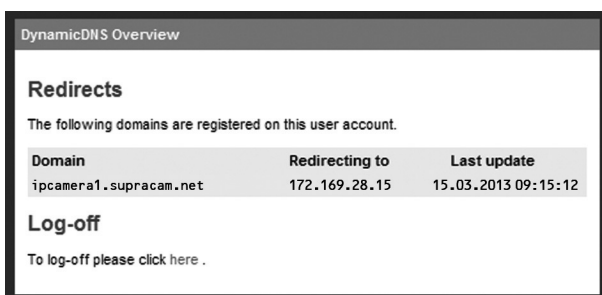
User name:

Password:

Repeat:

Security code: 

First, enter a user name. This may only consist of small and capital letters, numbers or a hyphen. The user name is used for the Internet address of the IP security camera. Enter, for instance, the user name "ipcamera" and, after registration, the IP security camera can be called up via address **http://ipcamera.supracam.net** as soon as it is connected to the Internet. After successful registration, the following adjacent information is provided.



**DynamicDNS Overview**

**Redirects**

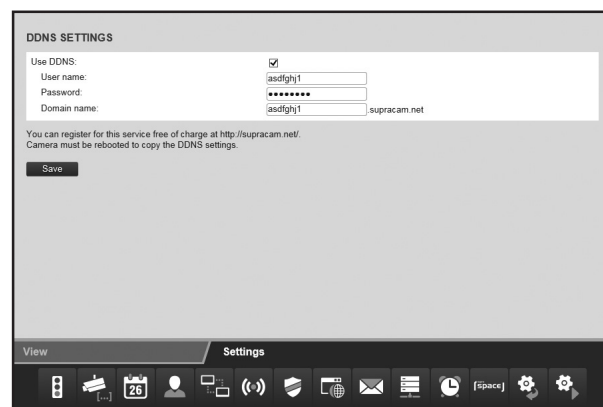
The following domains are registered on this user account.

Domain	Redirecting to	Last update
ipcamera1.supracam.net	172.169.28.15	15.03.2013 09:15:12

**Log-off**

To log-off please click here .

Change to DDNS settings of the IP security camera and select "Use DDNS".



**DDNS SETTINGS**

Use DDNS: ☒

User name:

Password:

Domain name:  supracam.net

You can register for this service free of charge at <http://supracam.net/>. Camera must be rebooted to copy the DDNS settings.

View Settings

Under "User name" and "Password" enter the same data used for registration via the DDNS Server. Also enter the User name specified during registration in the text field "Domain name". Click on "Apply", to accept the changed settings. You have to restart the IP security camera before the changes are saved in the DDNS settings.

### Mail settings

In certain circumstances, the IP security camera can send out a alarm message by email. For this purpose an email account must be specified from which emails will be sent out.

A private email address can, for instance, be used or you can set up a separate email address for the IP security camera. Select option "Mail settings" from the bottom of the menu and select "Use SMTP".

Activate "Use SMTP", if an email is to be sent out in the event of an alarm. Please note that the alarm must be activated under alarm settings.

The data required as regards the used email account will be provided by the Email provider. For your private email account you can also find this data in email programs such as Outlook or Thunderbird.

The SMTP Server (Simple Mail Transfer Protocol) is a post out-put server of an email provider. Emails are sent to this server for forwarding.

- **Server:** Enter address of SMTP server of Email account.
- **Port:** Enter port of SMTP server. The standard value is 25.
- **Encoding:** State the encoding used by the SMTP server.
- **Requires authentication:** State whether the SMTP server requires authentication. If yes, mark this option and state the user name and password of the email account.
- **Sender:** State email address via which an alarm message is to be sent.
- **Recipient 1-4:** Provide up to 4 email addresses via which an alarm message is to be sent. If you want a message to be sent to the email address, sending out the alarm messages, you have to enter the address also as recipient.
- **Send IP address:** This option allows you to determine whether an email will be sent with the current IP address of the IP security camera to the listed email addresses as soon as the IP address of the IP security camera changes.

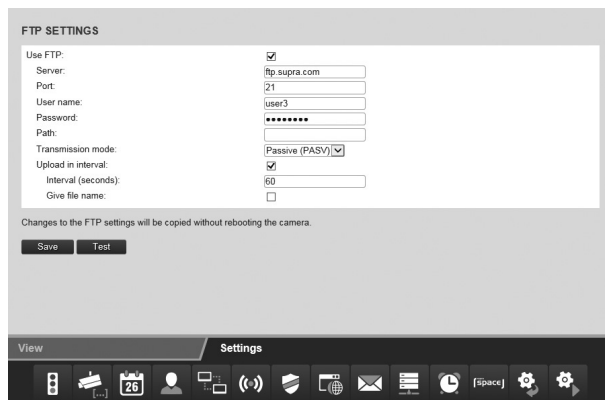
Fields "Server", "Port", "Sender" and "Recipient1" are mandatory fields. Click on "Test", to test the email settings. A test email is then sent to the listed email addresses.

Click on "Save", to accept the changed settings. The changes are saved without having to restart the IP security camera.

## FTP settings

The IP security camera offers the option to upload images to an FTP server once or regularly. Specify the required additional data for an FTP server to be used.

1. Select option "FTP settings" from the bottom of the menu and select "Use FTP".



**FTP SETTINGS**

Use FTP: ☒

Server:

Port:

User name:

Password:

Path:

Transmission mode:

Upload in interval: ☒

Interval (seconds):

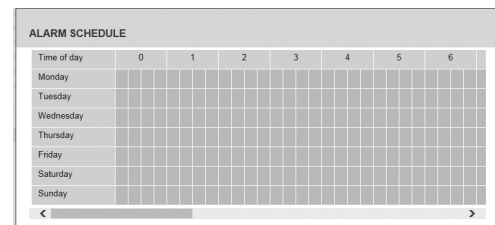
Give file name: ☐

Changes to the FTP settings will be copied without rebooting the camera.

View Settings

2. Activate "Use FTP", if images of the IP security camera are to be uploaded to an FTP server.
  - **Server:** Enter address of FTP server.
  - **Port:** Enter the port used for FTP-Server access. The standard value is 21.
  - **User name:** Enter the name of a user account entitled to write to the FTP Server.
  - **Password:** Enter password for User account.

- **Path:** Enter the path under which images are to be stored on the FTP server.
- **Transfer mode:** Select whether a passive or active FTP connection is to be requested for the transfer.
- **Upload in interval:** Select this option if you wish images of the IP security camera to be uploaded to the FTP server at regular intervals.
- **Interval (seconds):** Specify at what intervals an image is to be taken and transferred. Values are in seconds.
- **Enter file name:** Select this option if you wish to specify a file name. If this option has not been selected, a predefined file name will be used when saving the images.
  - **File name:** Enter your own file name. A sequential number is assigned to the specified name during saving of the images.
  - **Use time schedule:** You can restrict the period of time during which images can be loaded onto the FTP server. As soon as this option is selected, the adjacent time schedule appears, in which the active times can be selected. Select the times during which the alarm settings should be active.



**ALARM SCHEDULE**

Time of day	0	1	2	3	4	5	6
Monday							
Tuesday							
Wednesday							
Thursday							
Friday							
Saturday							
Sunday							

< >

**Specify max. number:** In order to limit the number of files saved on the FTP Server, you can also activate this option.

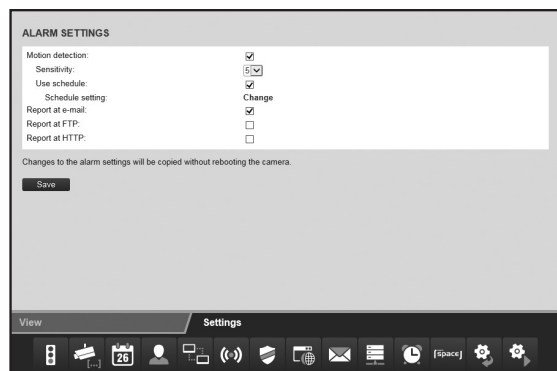
- **Number of files:** Activate this option if images are to be stored on the FTP server. Once this number has been reached the oldest image will be deleted to allow saving of another image.

To test entries for the FTP settings, click on "Test". A single image is the transferred to the FT server.

Click on "Apply", to accept the changed settings. The changes to the FTP settings are saved without having to restart the IP security camera.

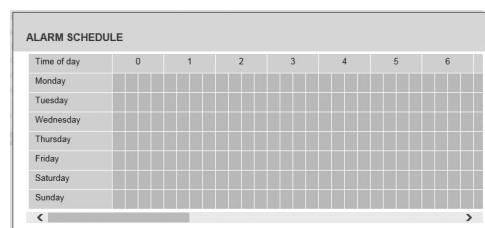
## Alarm settings

Specify under which circumstances the IP security camera should issue an alarm message and what should be done in the event of an alarm. Select option "Alarm settings" from the bottom of the menu. Depending on the set options, the following will be displayed:



1. **Motion detection:** Select this option to activate motion sensing. Select the times during which the alarm settings should be active.
2. **Sensitivity:** Enter the sensitivity for movement sensing using a value between 0 and 9. The higher the value, the higher the movement sensing sensitivity.
3. **Use time schedule:** You can restrict the period of time during which alarms can be triggered. As soon as this option is selected, the adjacent time schedule appears, in which the active times can be selected.

4.



5. **Compensation of light changes:** This option can be selected to ensure that the motion detection is not impaired by changing light conditions.
6. **Report to email:** Activate this option if an email is to be sent out in the event of an alarm.
7. **Report to FTP:** Activate this option if images are to be stored on the FTP server in the event of an alarm.
8. **Interval:** Activate this option if images are to be stored on the FTP server in the event of an alarm. Values are in seconds.

9. **Report to HTTP:** Activate this option if an HTTP address is to be called up in the event of an alarm.
10. **URL:** State the HTTP address to be called up in the event of an alarm.

Click on **"Apply"**, to accept the changed settings. The changes to the alarm settings are saved without having to restart the IP security camera.

### Resetting the IP security camera

Click on "reset now" to reset the IP security camera to the default settings.

Resetting takes 1 minutes. Wait until the Browser window shows the logging on option again.



#### NOTE!

- Selection of this function deletes all previous settings.
- If the network settings have been changed, the IP security camera may no longer be attainable under the current address. The IP security camera can be found again using the configuration program.
- The IP security camera can also be reset by pressing the RESET button underneath the camera. Keep RESET button depressed for approx. 5 seconds.

### Restarting the IP security camera

Click on "Restart now" to restart the IP security camera. This saves all entered settings.

Resetting takes 30 minutes. Wait until the Browser window shows the logging on option again.



#### NOTE!

- If the network settings have been changed, the IP security camera may no longer be attainable under the current address. The IP security camera can be found again using the configuration program.

## Potential legal infringements

Observe the following information for using the IP security camera:

### Copyright

Generally every person owns his/her own image. According to the copyright law, images may only be published without the consent of the respective person if the person appears only as a person embellishment to a landscape image, or a location as a public place. The answer to the question of whether a person is embellished depends on the individual circumstances. For reasons of legal certainty persons should be informed in all cases in which images are taken with the IP security camera from which persons can be identified **see also section "Duty of notification")**.

### Protection of privacy

Shown images may not infringe the privacy of others. Do not point camera onto the garden or entrance door of your neighbour, even if these locations are visible from your known home or public locations. This does not entitle you to publish respective photos or videos.

### Personal determinability

Personal determinability exists, where it can be determined that a certain person was at a certain place at a certain time. The person can also be identified by a personal identifier such as a vehicle registration plate. Personal determinability of persons must be absolutely avoided.

### IP security cameras at the place of work

Surveillance of workplaces is subject to particular strict regulations in Germany. Employers should not use IP security cameras at the place of work unless potential legal infringements can be fully excluded.

### Traffic IP security cameras

When using IP security cameras facing traffic, it is recommended to configure the location and view of the camera in such a way that road users are identifiable from any images through a vehicle registration plate. Road users could also be determined from lettering on vehicles.

### Duty of notification

Where a personal identification of persons cannot be excluded, a clearly visible notice concerning the IP security camera must be erected at all accesses to the monitored area. Passers-by must also be informed that by entering the monitored area they give their permission to pictures/videos being taken so that if they do not wish to give their consent they can avoid the picture/video being taken by not accessing the area. The voluntary nature of the declaration must be observed. If the camera trap is located at a point persons have to pass to reach their destination (e.g. entrance of a place of interest), no consent is deemed to have been given as no voluntary nature applies.

### Declaration of conformity



The EC Declaration of Conformity can be requested from the below address.

The Manufacturer hereby declares that the CE marking was applied to the product in accordance with the basic requirements and other relevant provisions of the following European Directives:

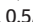
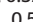
2011/65/EC RoHS Guideline

2004/108/EC Low Voltage Directive

1999/5/EG R&TTE Guideline

**supra** Elektronik-Vertriebs-GmbH  
 Denisstr. 28A, 67663 Kaiserslautern, Germany

## Technical specification

Model:	IPC-20C
Image sensor:	1/5" CMOS sensor, 640 x 480 pixels
Lens:	F=2.4, f=3.6 mm, Infrared lens
Infrared light:	24 Infrared LEDs
Night vision:	20 m
Minimum lighting:	0.5 Lux (w/o LEDs)
Angle of view:	60°
Supported protocols:	HTTP, FTP, TCP/IP, SMTP, DHCP, DDNS, UPnP
WLAN standards:	IEEE 802.11 b/g/n
LAN connection:	10/100 Mbit/s RJ-45
Power supply:	PoE adapter: GRT-POE08-480050 Input: 100 - 240V~, 50/60 Hz; 0.8A Output: 48V  , 0.5A Camera: 48V  , 0.5A
Connections:	LAN
Ambient temperatures:	-20°C to +50 °C
Ambient humidity:	20 - 85%
Dimensions(HxWxD):	75 mm (H) x 80 mm (B) x 170 mm (T)
Weight:	Approx. 715 g



### NOTE!

We reserve the right to make technical and optical changes to the product as part of product improvements.

## Storing

When not in use please disconnect the IP security camera from the power supply and store it in a clean and dry place outside of the reach of children.

## Cleaning



### WARNING!

#### Burn hazard!

IP security camera becomes hot during operation!

- Let IP security camera cool down completely!



### NOTE!

#### Danger of short circuit!

Any water that has entered the housing can cause a short.

- Never immerse IP security camera in water.
- Ensure that no water enters the housing.



**NOTE!****Danger from incorrect operation!**

Incorrect use of the IP security camera can cause the IP security camera to be damaged.

- Do not use any aggressive cleaners, brushes with metal or nylon bristles or sharp or metallic cleaning objects, such as knives, hard spatulas and similar. These can damage the surface.
- Never place IP security camera in dishwasher. This would destroy the camera.

1. Pull out mains connector prior to cleaning.
2. Let IP security camera cool down completely.
3. Wipe IP security camera with a slightly damp cloth. Let IP security camera dry completely.

## Disposal

### Dispose of packaging



For disposal, separate packaging into different types. Cardboard and board must be disposed of as paper and foil must be recycled.

### Dispose of used camera

(Applicable in European Union and other European countries using systems for separate collection of recyclables)



#### **Do not dispose of used cameras in household waste!**

If the IP security camera can no longer be used each consumer is **legally obliged to dispose of used cameras, separately from domestic waste**, e.g. at a collecting point of the municipality/district.

This ensures that used equipment is recycled correctly and that negative effects on the environment are avoided. Electrical equipment is consequently marked with the adjacent symbol.

## License declaration

The software used by this product is licensed under a license governed by the conditions of GNU – General Public License. We expressly point out that for software based on the license conditions of the GNU - General Public License, no liability is accepted.

The software is based on the software published on page

**<http://sg-gpl.net/>.**

The listed software is licensed according to the conditions of GNU – General Public License. The software for this product was specifically adapted for the camera. The source text of the software implemented in this product will be forwarded if requested by email from

**[info@supra-elektronik.com](mailto:info@supra-elektronik.com).**

In this case, your email must contain information stating the product, serial number, proof of commercial purchase source and proof of purchase date of product from a commercial source.

We guaranty that the source text of the implemented software will be forwarded for a period of at least three years from the date of purchase, provided that the commercial source has obtained the product directly from us or with the involvement of only commercial agents.

## MAGINON WARRANTY CARD

### IP security camera IPC-20C

Your details:

Name \_\_\_\_\_

Address \_\_\_\_\_

\_\_\_\_\_

☎ \_\_\_\_\_ Email \_\_\_\_\_

Date of purchase\* \_\_\_\_\_

\* We recommend you keep the receipt with this warranty card

Location of purchase \_\_\_\_\_

Description of malfunction:



Return your completed warranty card together with the faulty product to:

Sertronics LTD,  
45 Regal Drive,  
Walsall Enterprise Park,  
Walsall, WS2 9HQ  
United Kingdom  
[info@supra-elektronik.com](mailto:info@supra-elektronik.com)

#### AFTER SALES SUPPORT

☎ UK IRL 00 800 - 78 77 23 68

MODEL: IPC-20C PRODUCT CODE: 92373 03/2015

Calls are free of charge if calling from landline. Calls from mobiles may vary. Phone lines available Monday to Friday, 8am - 7pm

**3**  
YEARS  
WARRANTY



## Warranty Conditions

Dear Customer!

The **ALDI warranty** offers you extensive benefits compared to the statutory obligation arising from a warrant

**Warranty period:**      **3 years** from date of purchase:

**Costs:**                      Free repair/exchange

No transport costs.

**Hotline:**                      Free hotline.

**ADVICE:**                      Please contact our service hotline by phone, e-mail or fax before sending in the device. This allows us to provide support in the event of possible operator errors.

**In order to make a claim under the warranty, please send us:**

- together with the faulty item the original receipt and the warranty card properly completed.
- the product with all components included in the packaging.

---

**The warranty does not cover** damage caused by:

- **Accident or unanticipated events** (e.g. lightning, water, fire).
- **Improper use or transport.**
- **Disregard of the safety and maintenance instructions.**
- Other **improper treatment or modification.**

After the expiry of the warranty period, you still have the possibility to have your product repaired at your own expense. If the repair or the estimate of costs is not free of charge you will be informed accordingly in advance.

This warranty does not affect your statutory rights.“